



Capital for Communities—
Opportunities for PeopleSM

CRF Individual Investor Program

Offered by Calvert Foundation

For individuals who want to achieve a social good along with a personal investment gain, **putting your money to work for your community has never been easier.**

**Call Valerie Hohman at 612-305-2067
or visit www.crfusa.com/SROI
to request more information.**

Now, individual investors can support high-value, community-based economic development initiatives with the CRF Individual Investor Program from Community Reinvestment Fund, USA and Calvert Foundation.

Part of a movement towards socially responsible investing, the CRF Individual Investor Program offered by Calvert Foundation provides a unique alternative to both traditional investments in for-profit businesses and charitable donations. These investments earn a financial return while supporting values-based initiatives that drive change at a community-driven, local level.

The investments, known as Community Investment Notes, are not obligations of, or in any way guaranteed by CRF.

COMMUNITY INVESTMENT – SIMPLIFIED BY CRF

For every \$1 invested, CRF and its lending partners can create at least \$28 of direct economic benefit within communities across the country.

CRF directs capital from investors and lenders into communities that are underserved by traditional financial institutions. This unique financing model makes it possible for thousands of low- and middle-income individuals and entrepreneurs to access capital for:

- Small businesses
- Affordable housing
- Community services
- Child care
- Health care

Through its national network of lending partners, CRF targets business owners who need it most – those who may not be eligible for traditional financing. Investors will support greater access to capital for underserved populations, helping to build stronger communities and making a significant difference in the lives of hard-working Americans.



SINCE ITS INCEPTION, CRF HAS HELPED:

- Serve more than **185,000** people
- Create **17,000** affordable housing units
- Create or retain more than **37,000** jobs
- Serve more than **129,000** people at community facilities
- Fund more than **500** minority- and women-owned businesses

STABLE INVESTMENTS IN COMMUNITIES

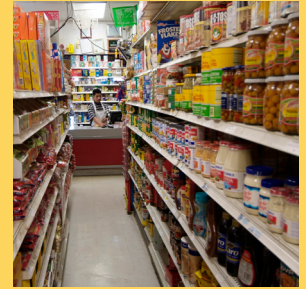
The CRF Individual Investor Program offered by Calvert Foundation helps fund consistently stable investments in community development. Since 1988, CRF and its lending partners have injected more than \$1 billion into low- to middle-income communities – all of it raised from private capital sources. Individual investors can feel confident knowing CRF is able to deliver meaningful results to communities.

THE PROGRAM IS IDEAL FOR:

- Individual investors who want a strong social return-on-investment.
- Institutional investors looking to diversify their community investments.
- Financial advisors seeking a smart, beneficial investment for clients interested in achieving a “double bottom-line.”

PROGRAM FEATURES INCLUDE:

- Community impact reports, so investors can see how CRF is helping people and making a difference in communities.
- Variable investment amounts starting at \$1,000, so investors at all income levels can participate.
- Variable investment length from one to 10 years, so investors can customize their investments based on needs and objectives.
- Flexible financial rate of return from 0%-3%, allowing investors to limit their financial rate of return and increase community benefits.



CRF – COMMUNITY INVESTMENT AT WORK

Primitivo Morales, a Latino entrepreneur, wanted to open a grocery and deli on the site of a former brothel in Minneapolis, Minn. Through a CRF loan program, Morales reduced his down payment and qualified for bank financing that allowed him to purchase the building.

Morales' store – **La Poblanita** – was an immediate success, with sales exceeding projections by a wide margin. As of 2008, Morales employs more than 30 people, all of them Latino, and La Poblanita is a cornerstone of an urban renaissance in south Minneapolis.

Note: This does not constitute an offer to sell securities. The investments, known as Community Investment Notes, are not obligations of, or in any way guaranteed by, Community Reinvestment Fund, USA. Community Reinvestment Fund, USA is not a registered broker-dealer under Federal securities law.

ABOUT THE CRF INDIVIDUAL INVESTOR PROGRAM

Through this program with CRF, Calvert Social Investment Foundation, a 501(c) 3 nonprofit, offers the Community Investment Note, a 1-10 year note earning up to 3% interest. The Note is subject to certain risks, is not a mutual fund, is not FDIC or SIPC insured, and should not be confused with any Calvert Group-sponsored investment product. This document is neither an offer to sell nor a solicitation of an offer to buy these securities; only the prospectus, which should be read before investing, makes the offering.

ABOUT CRF

Community Reinvestment Fund, USA (CRF), a national nonprofit organization, is the nation's leader in bringing capital to public and private nonprofit community development lenders through the secondary market for loans. Formed in 1988, CRF has injected more than \$1 billion into low-income and economically disadvantaged communities around the country to help stimulate job creation and economic development, provide affordable housing and support community facilities.

Community Reinvestment Fund, USA
801 Nicollet Mall, Suite 1700 West
Minneapolis, Minnesota 55402
800 475.3050 / 612 338.3050 tel
612 338.3236 fax www.crfusa.com